



Jade från före vår tideräkning



Hongshan ca
4700-2900 BC



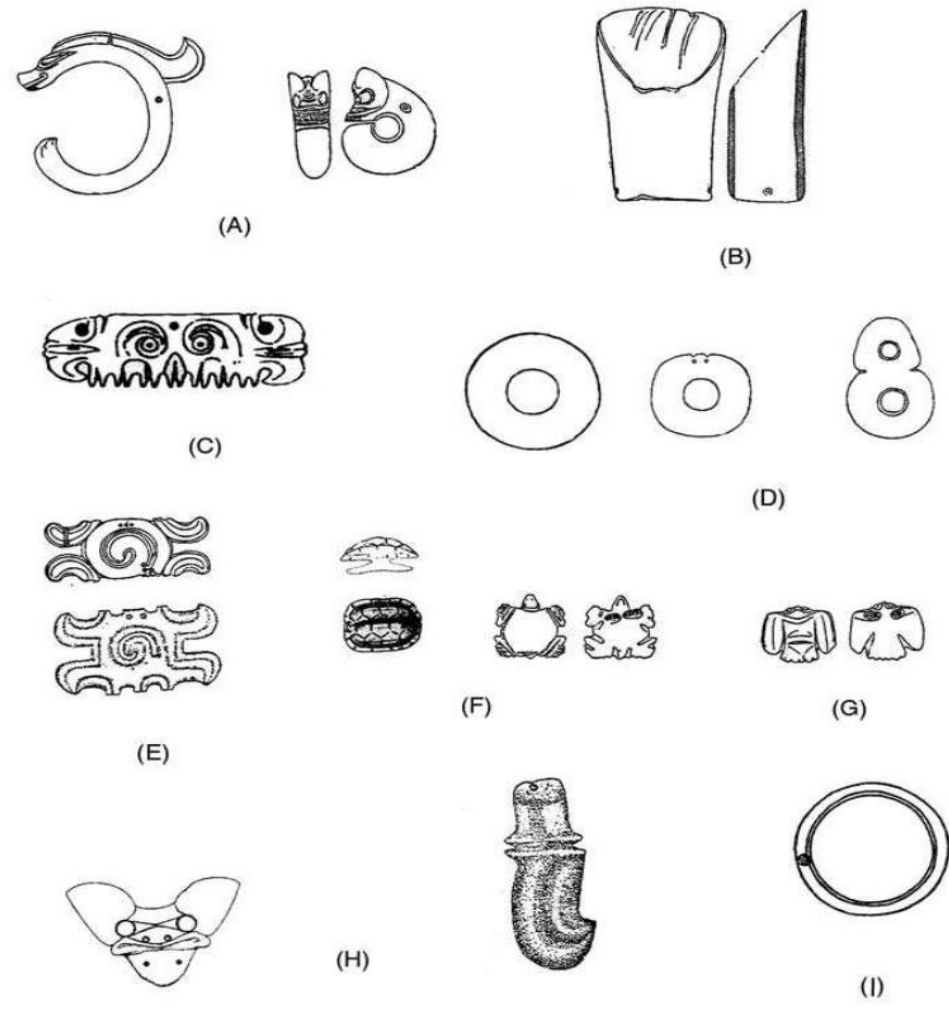


Figure 2 Hongshan jades: (A) pig dragons; (B) hoof-shaped head ornament; (C) comb-like head ornament; (D) disks; (E) cloud ornament; (F) turtles; (G) bat; (H) pendants; (I) bracelet



9

Height 11 cm
高 11 厘米

Lateral and frontal views of the coiled dragon.





Liangzhu ca
3300-2300
BC

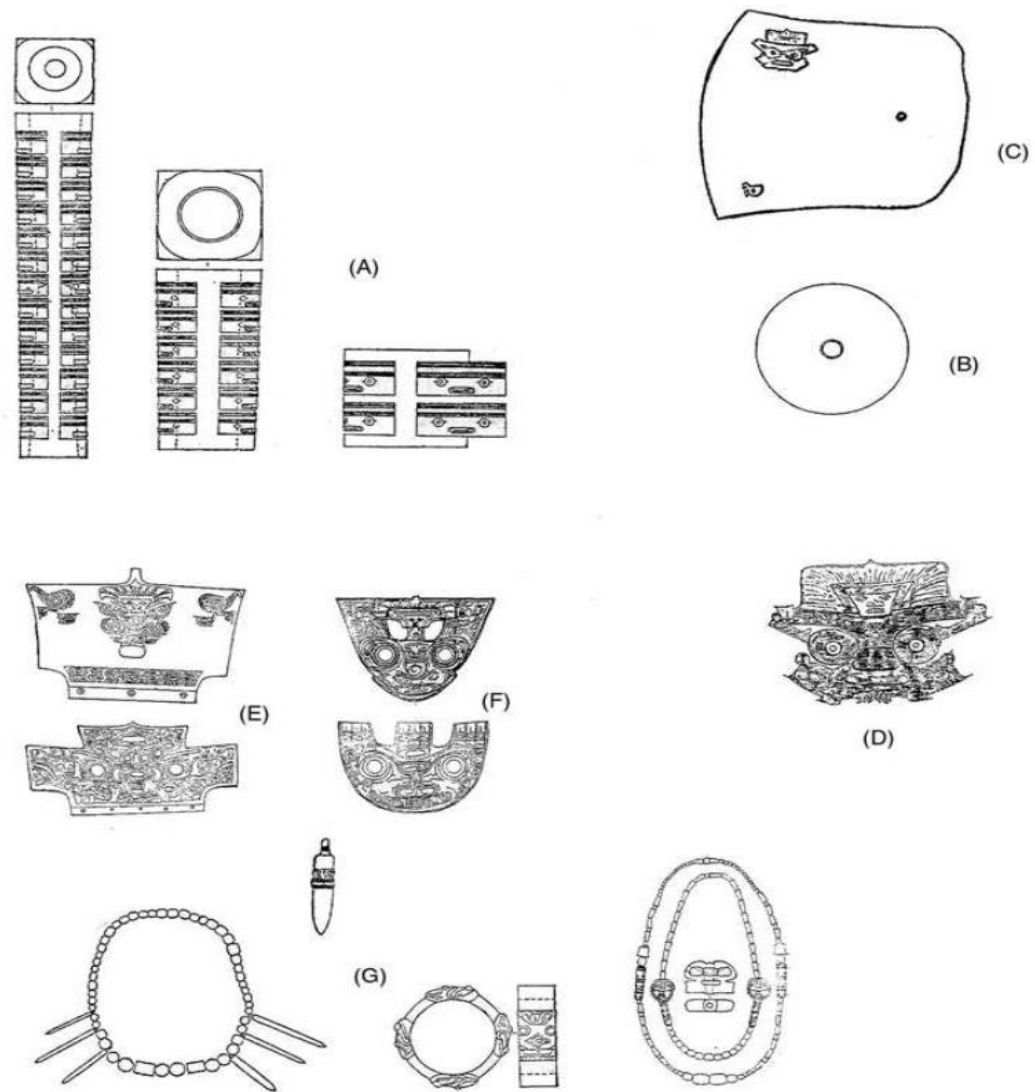


Figure 4 Liangzhu jades: (A) cong tubes; (B) bi disk; (C) axe with emblem; (D) emblem; (E) head ornament; (F) fixtures; (G) necklaces, pendants and bracelet





THE
云上泽国
WATERBORN
良渚文明 线上主题展览
KINGDOM
LIANGZHU ONLINE EXHIBITION

主办：浙江省文化和旅游厅
斯德哥尔摩中国文化中心

SPONSOR
ZHEJIANG PROVINCIAL DEPARTMENT OF CULTURE AND TOURISM
CHINA CULTURAL CENTER IN STOCKHOLM



Liangzhu is a historic name. While whisking off the dust of 5000-year history and appreciating this ancient site, the cradle of early human civiliza-



Kina 5000 år





LIANGZHU
良渚文化, 公元前 3300-2200

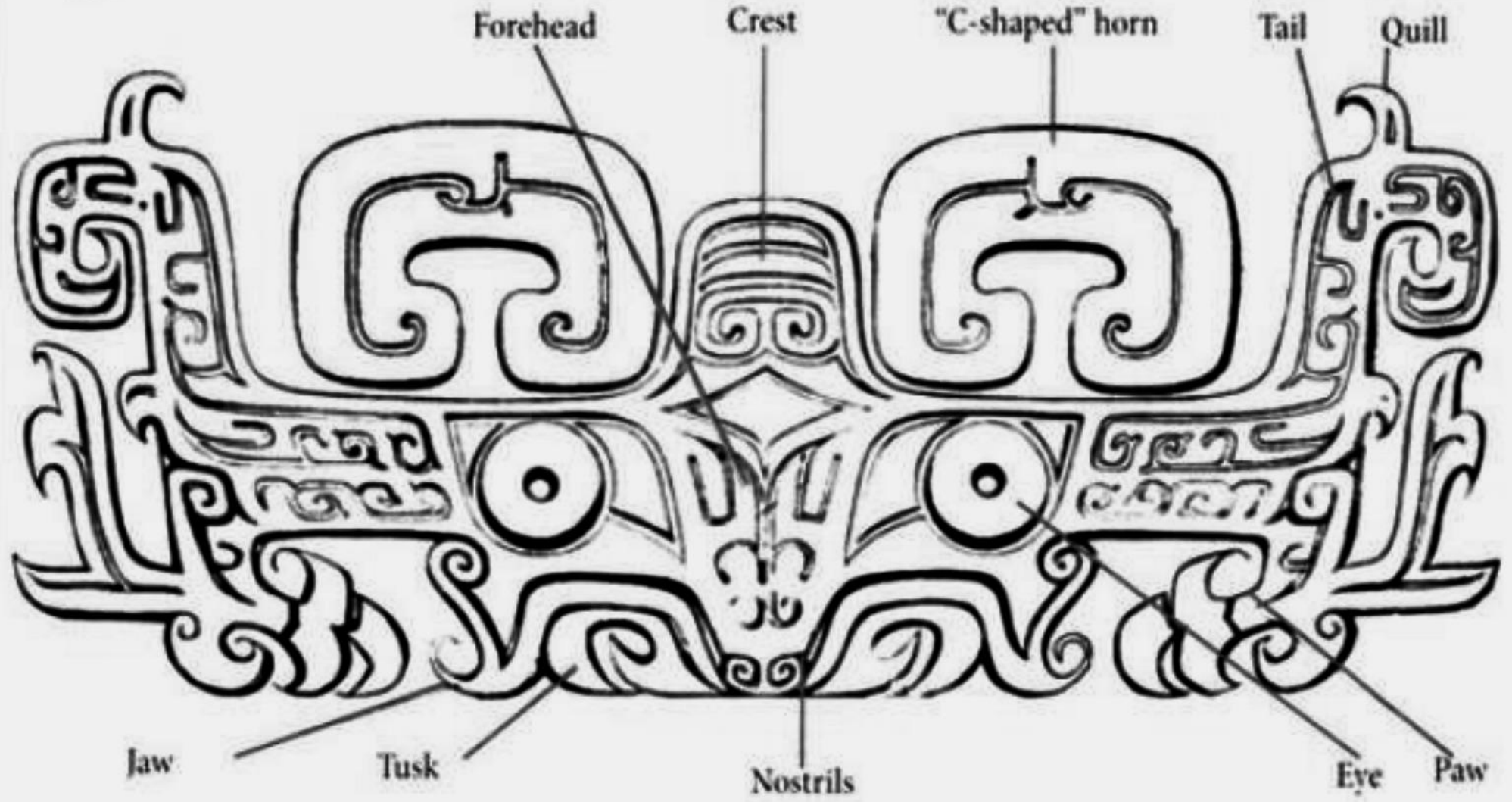
CONG WITH MASKS
獸面紋玉琮



57
Height 10 cm
高 10 厘米



9a









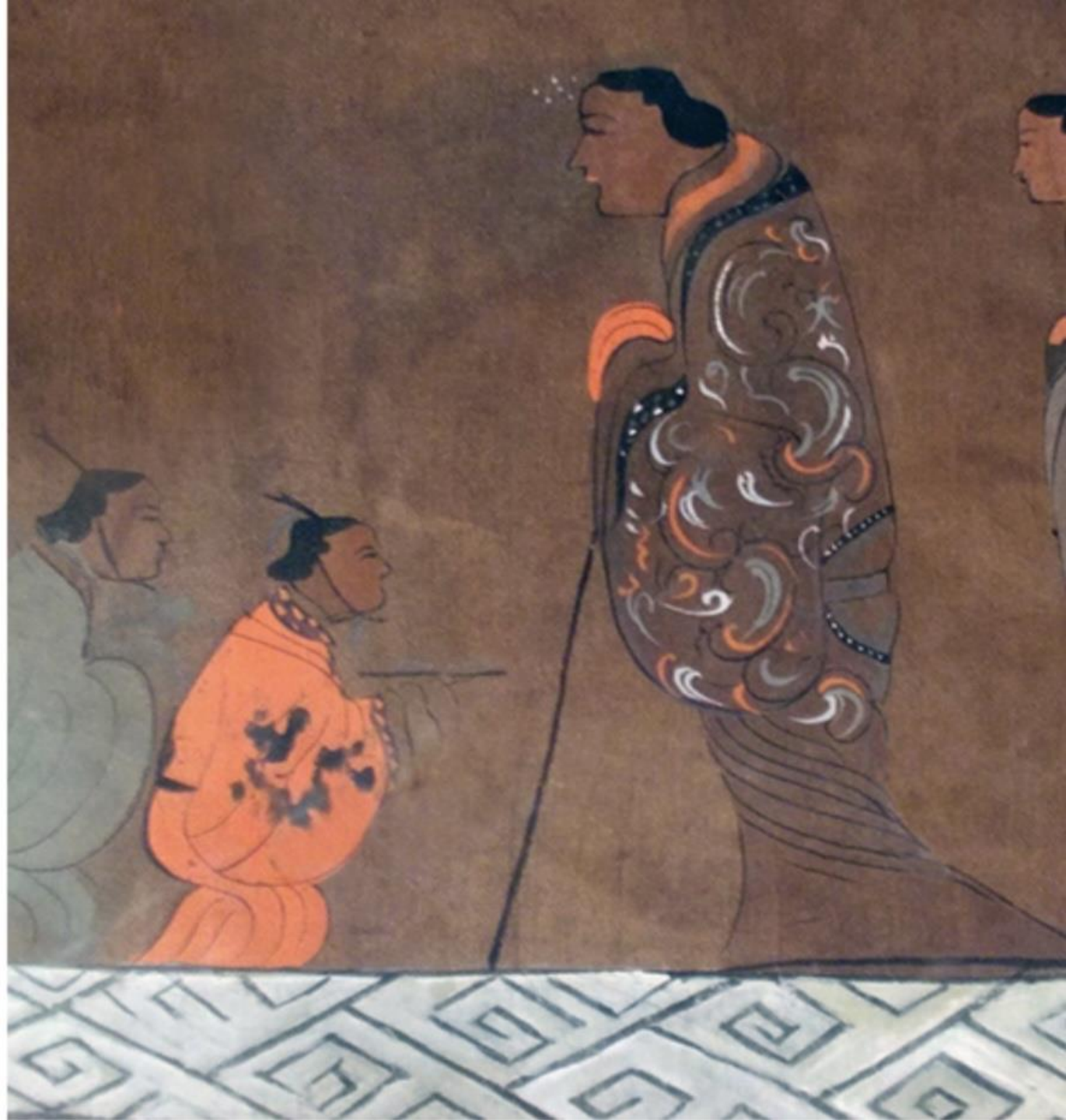
Registers

Heavenly realm

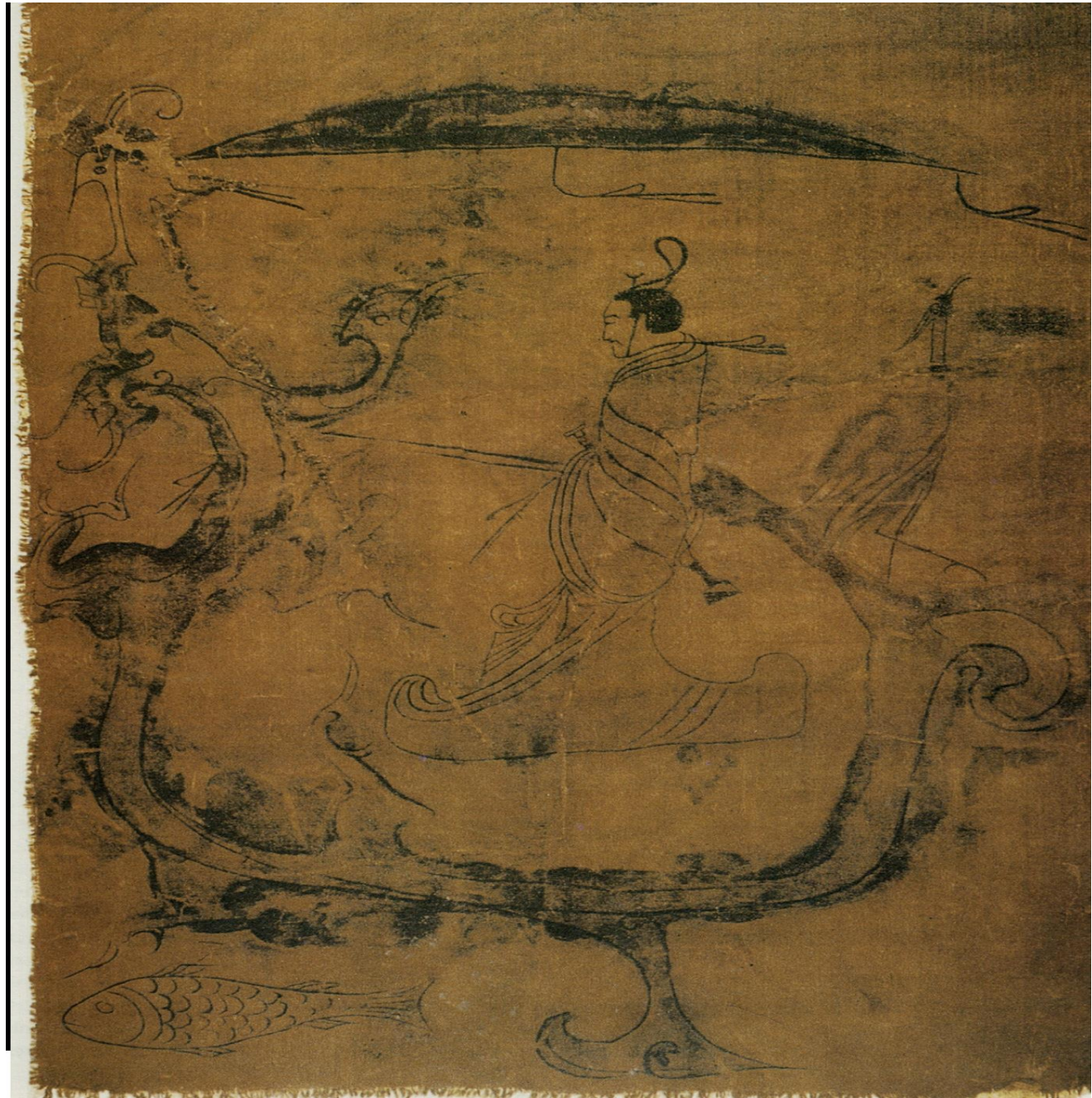
Lady Dai and her attendants

Body of Lady Dai with mourners

Underworld











228
Diameter 8.8 cm
直徑 8.8 厘米



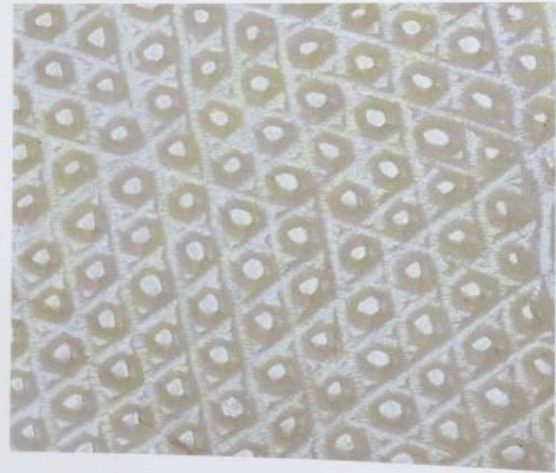
229
Diameter 18.7 cm
直徑 18.7 厘米



230
Diameter 13 cm
直徑 13 厘米



231
Diameter 16.2 cm
直徑 16.2 厘米





Qijia 2200-
1600 BC







Shang 1300-
1100 BC



Jade:
Renässans
och
omtolkning



REC

AutoSave ON PPT Final Search Wilson, Keith

File Home Insert Draw Design Transitions Animations Slide Show Review View Help Share Comments

7 Late Shang bronze carving

8

9 Antiques in Fu, Hebei, China

10 Neolithic cong tubes

11 Late Shang pendant made from a Neolithic cong tube

12 Late Shang ear drums and ornaments made from Neolithic cong tubes

Slide Show x Resume Slide Show

Late Shang pendant made from a Neolithic *cong* tube

Pendant in the form of a mask, probably reworked from a tube (*cong*)
 Late Shang dynasty, Anyang period, ca. 1300-1050 BCE
 China, probably Henan province, Anyang
 Jade (nephrite)
 3.8 x 4.8 x 2.3 cm
 Gift of Arthur M. Sackler
 Arthur M. Sackler Gallery S1987.865

Slide 11 of 30

the second diagram and the image to the right, retains a one quarter.



Drakar; Shang- Västra Zhou





Fu Hao; Drottning & General





Western
Zhou ca
1050-771





a



b

Plate 5-4-5
Jade Ornament in shape of phoenix crowned with dragon
龍冠鳳紋玉飾
Late Shang dynasty
l. 11.3, w. 5, t. 0.3 cm (故雅 00960/呂-1657-27-22)
a. full view b. ink rubbing

sty was a
f mystical
tors. They
aped jade
4-5, to be
l spirits to
e also has
h has been
ct with the
ns of jade
ned some-
and such
were very



b



a

Plate 5-4-6
Jade Insert with dragon-phoenix pattern
龍鳳紋玉嵌件
Early-to mid-Western Zhou dynasty
h. 8.7, w. 3.1, t. 0.5 cm (購玉 611)
a. full view b. ink rubbing

...ers. The
...ve equally similar
...lates 5-6-6 through



Plate S-6-3
Jade Ornament with dragon-phoenix pattern
玉龍鳳紋飾件
Early-to mid-Western Zhou dynasty
l. 7, w. 6.1, t. 0.4 cm (中玉 645)

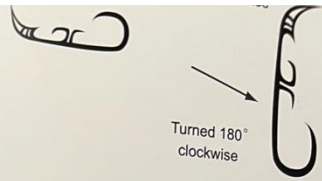
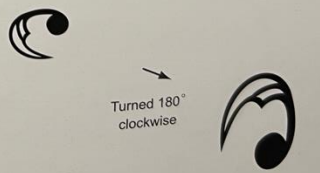
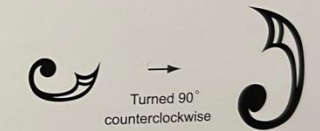
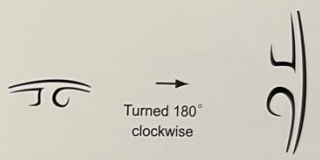


Plate S-6-4
西周早中期
Jade Insert with dragon-phoenix pattern
玉龍鳳紋玉嵌件
Early-to mid-Western Zhou dynasty
l. 8.7, w. 3.1, t. 0.5 cm (購玉 611)



to a typical design



172
Length 7 cm
長 7 厘米



173
Height 7.1 cm
高 7.1 厘米



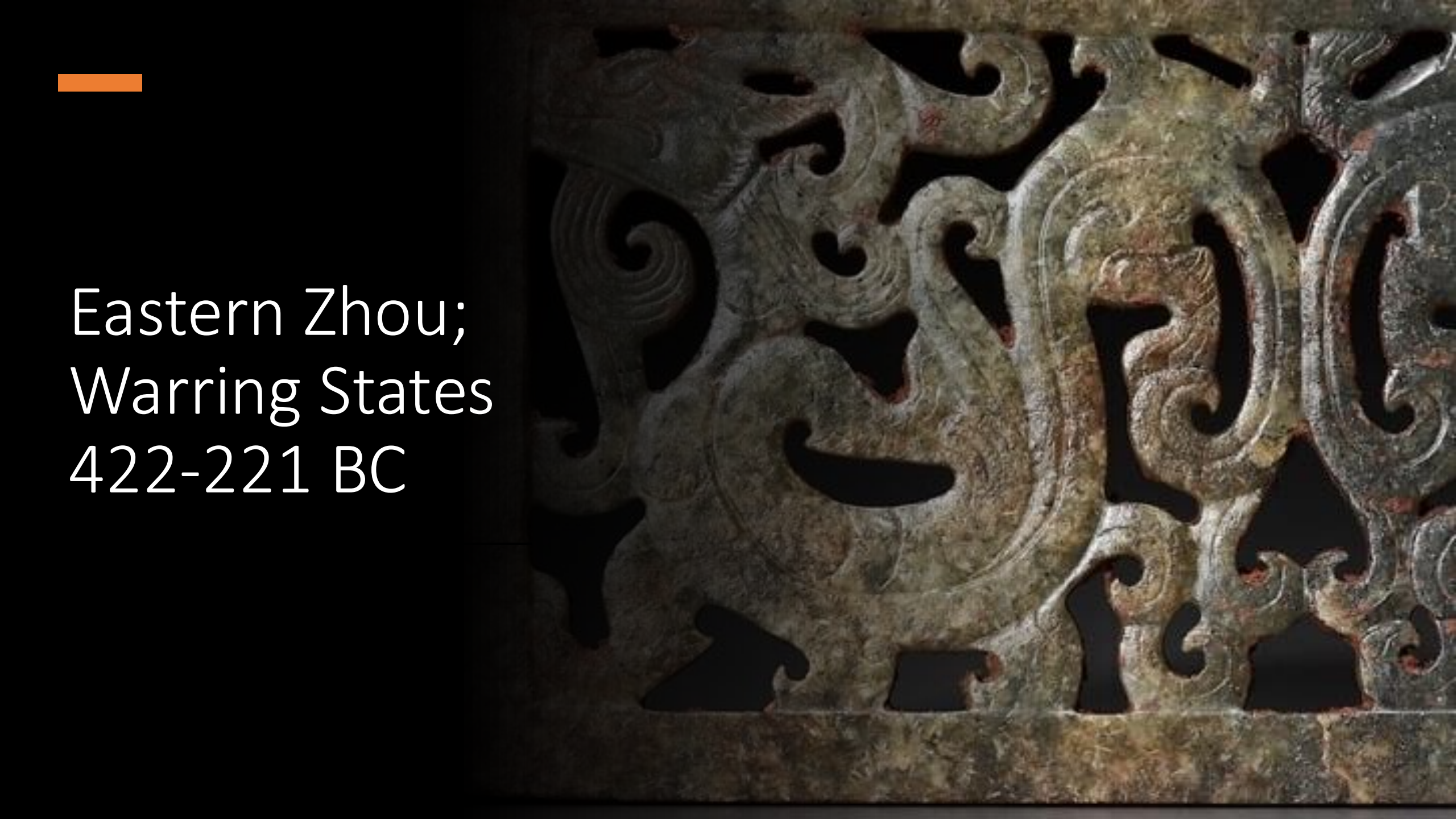
174
Height 6.4 cm
高 6.4 厘米

Eastern Zhou;
Spring &
Autumn 771-
422 BC









Eastern Zhou;
Warring States
422-221 BC



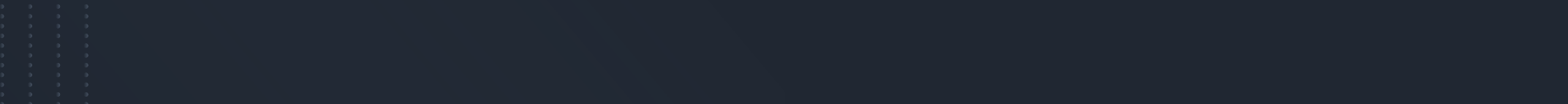


王



Han 206 BC –
220 AD

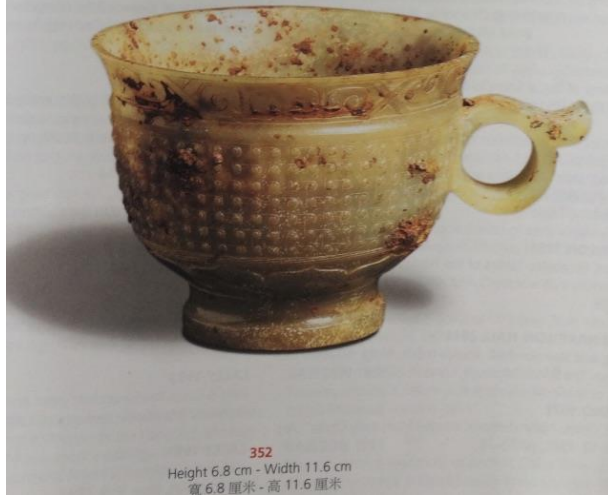








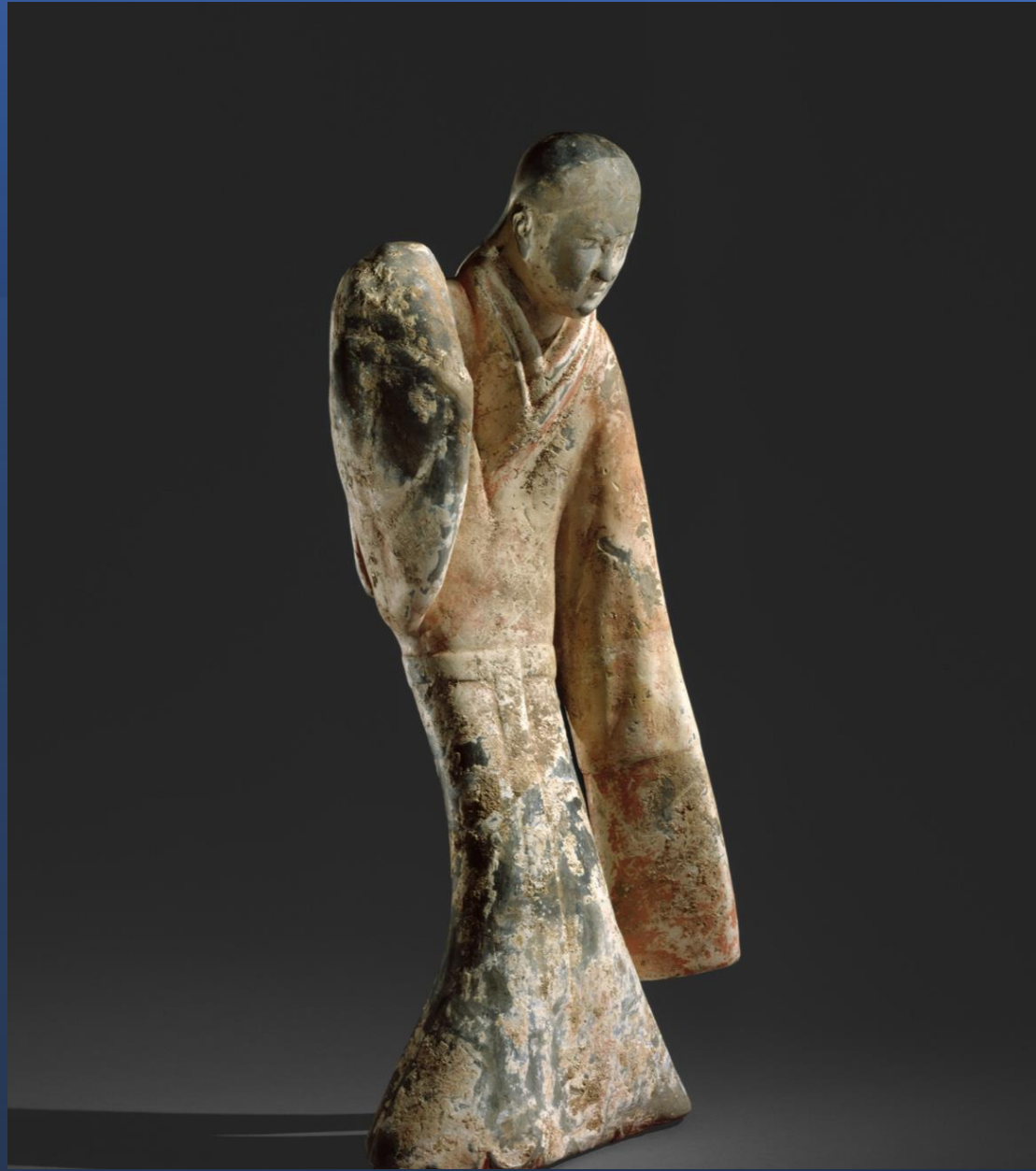
351
Width 13.9 cm - Height 5.4 cm
寬 13.9 厘米 - 高 5.4 厘米



352
Height 6.8 cm - Width 11.6 cm
高 6.8 厘米 - 寬 11.6 厘米

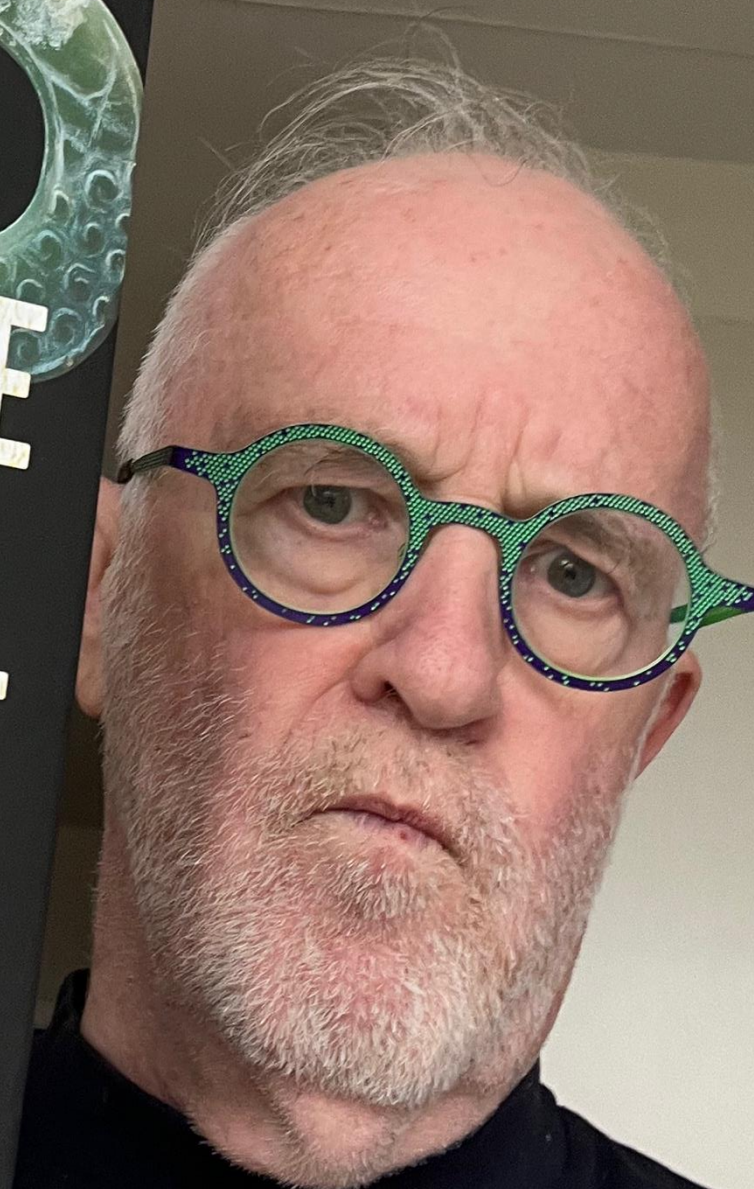
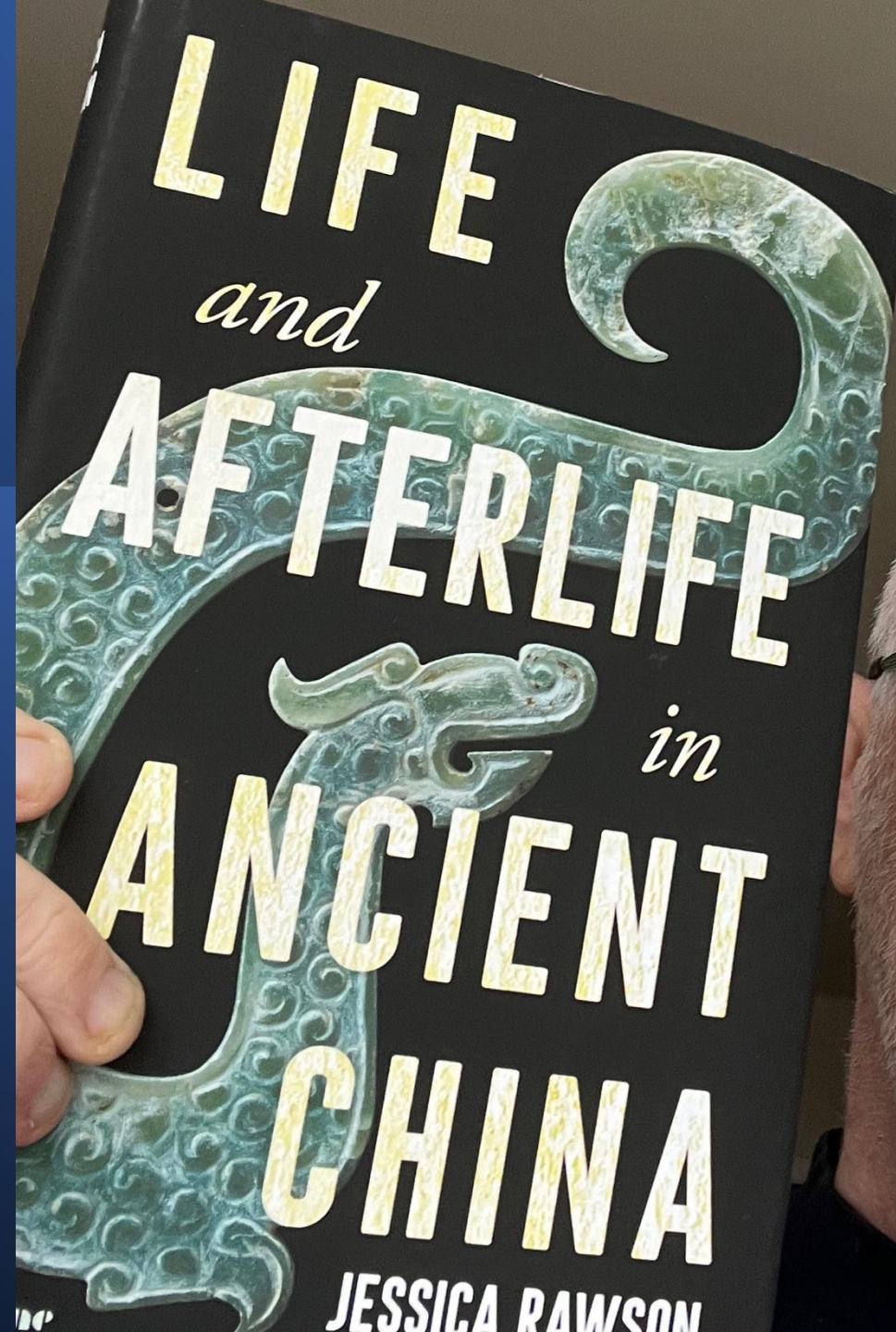








Litteraturtips:



Thank you
for
listening!

